



REFLECTIONS

A BI-MONTHLY NEWSLETTER | SEPTEMBER 2024 ISSUE

IN THE NEWS: PRIMARY CARE PROVIDERS FILL RURAL GAPS IN AUTISM RESOURCES

In the July 2024 Rural Health Information Hub article, Kristin Sohl, MD, a pediatrician at the University of Missouri Health Care and founder of ECHO Autism Communities, highlights a significant gap in understanding ASD and other developmental conditions among primary care providers in both urban and rural areas.

In 2015, Dr. Sohl and her colleagues established ECHO Autism to enhance primary care providers' ability to screen for and identify ASD characteristics. The program, inspired by the national Project ECHO Model, uses virtual meetings to connect providers with expert specialists and facilitate peer discussions. Early on, it became evident that some participants had "the desire, the ability, and the need" to go beyond screening and identification, according to Dr. Sohl.

Consequently, in 2016, she and her colleagues developed an early diagnostic model to enable primary care clinicians to diagnose ASD.

Read more about the model [HERE](#).

ECHO AUTISM SPANISH PROGRAMS UPDATE

We are excited to share some fantastic news about our Spanish Activities! Recently, we held a Spanish Partner Launch Training with 16 participants from 7 different organizations, including our 4 new partners:

- Autismo Día a Día from Atlanta, GA
- edemi from Mexico
- Hospital Churruca from Argentina
- OSPIP from Argentina.

We are committed to bridging gaps globally, and there is a significant need for this within the Latin American population. We look forward to collaborating with these amazing organizations to continue promoting equitable autism care in our Spanish-speaking communities.

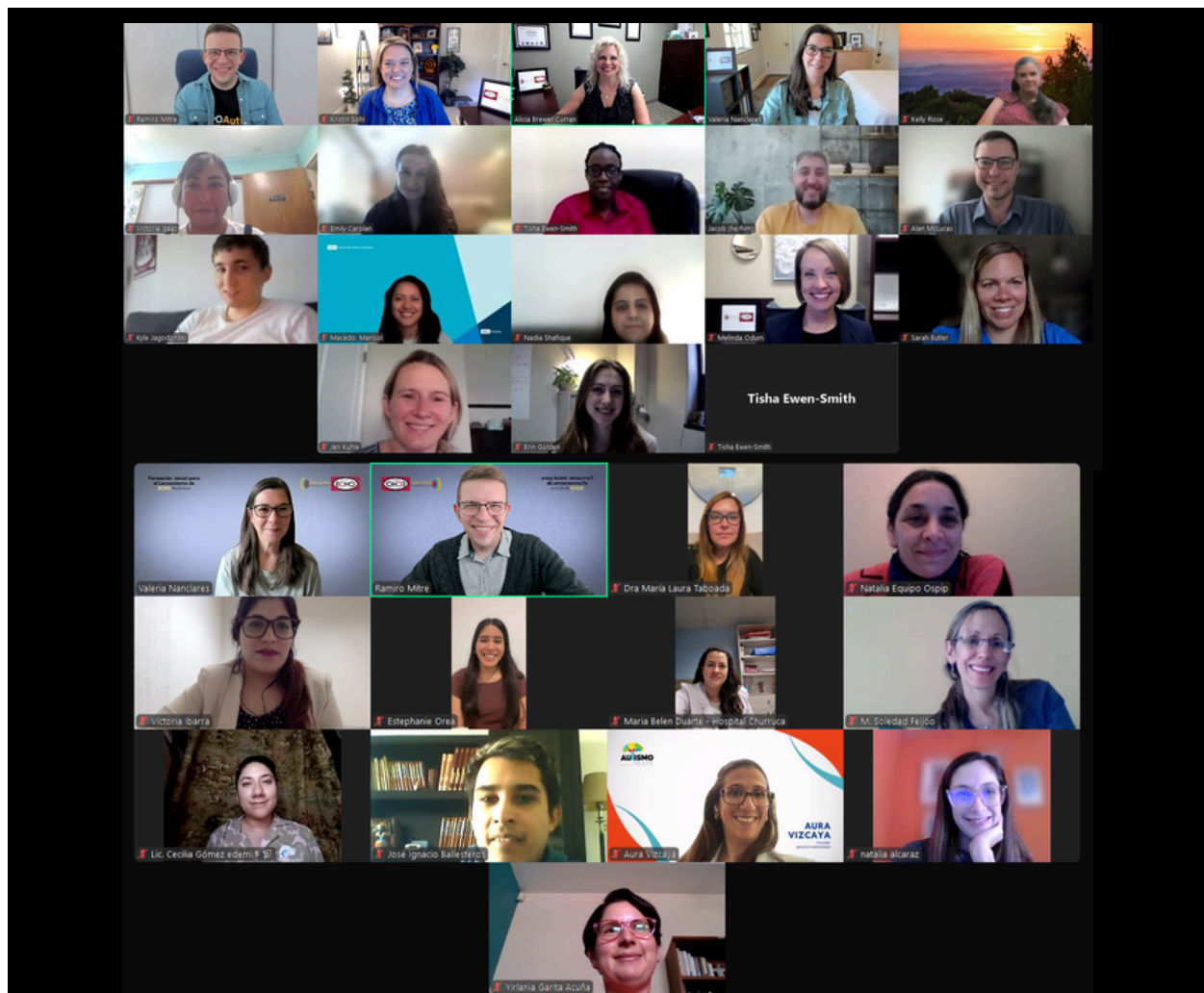


ECHO AUTISM COMMUNITIES PARTNER LAUNCH CLASS OF JUNE 2024

We had an incredible turnout for our June 2024 ECHO Autism Communities Partner Launch Trainings!

Look at these organizations who are changing the world!

- Anderson Center for Autism
- University of California, Los Angeles
- The Smile a While Foundation
- New Jersey American Academy of Pediatrics
- The University of Iowa
- Virginia Polytechnic Institute and State University
- Nationwide Children's Hospital
- edemi
- Program for Early Detection and Concientization on Developmental and Autism Spectrum Disorders
- Autismo Dia a Dia
- Hospital Médico Policial Churruca Visca
- Unión Obreros y Empleados del Plástico
- Autismo Puebla A.C.
- Capacitaciones Autismo Internacional



ECHO AUTISM PROGRAM LAUNCHES

ECHO Autismo Puebla from Mexico launched a new cohort focused on education. The team hosted a kickoff training on July 17, 2024, and started the ECHO sessions on August 31, 2024.

UCLA LEND launched a new ECHO on June 13, 2024, partnering with the LA County Dept of Public Health and Nurse Practitioners in their local health departments. The overall aim is to support Nurse Practitioners in better identification of autism and how to better support their patients.

Vanderbilt University Medical Center just launched their second ECHO Autism series on June 13, 2024, called Training Community Clinicians to Enhance Quality Care for Adults with Intellectual or Developmental Disabilities (I/DD). This project seeks to support clinicians providing care for adults with intellectual/developmental disabilities by providing training specific to I/DD and improving patient outcomes and satisfaction.

ECHO AUTISM COMMUNITIES IN THE NEWS

In the United States, autism diagnosis has traditionally been completed by developmental specialty clinicians who conduct a comprehensive evaluation that includes a diagnostic interview, observational behavioral assessment, and related developmental and behavioral testing. We now know that many young children with clear clinical presentations may not require time-intensive comprehensive evaluations conducted by specialists for accurate diagnosis.

This article discusses evidence and considerations for primary care autism diagnosis and actionable steps to promote scaling of early autism diagnosis in the community-based primary care practice.

McNally Keehn, Rebecca PhD*; Penner, Melanie MD†,‡; Shannon, Jennifer MD§; Sohl, Kristin MD||; Weitzman, Carol MD¶; Zuckerman, Katharine E. MD MPH**. Considerations and Actionable Steps to Promote Scaling of Early Autism Diagnosis in Community Primary Care Practice. *Journal of Developmental & Behavioral Pediatrics* ();10.1097/DBP.0000000000001297, July 12, 2024. | DOI: 10.1097/DBP.0000000000001297

Read the full article [HERE](#).



ECHO AUTISM: EARLY INTERVENTION

ECHO Autism: Early Intervention is a virtual learning program where Missouri early intervention professionals who work with young autistic children learn best practice strategies for helping children in the therapy setting. This program aims to increase participant knowledge and confidence in their ability to deliver evidence-based early intervention therapy services for young children on the autism spectrum. Free continuing education credit is available for each ECHO session.

This program is available to Missouri school and community-based early intervention professionals who work with children up to 8 years old including OTs, SLPs, ABA clinicians, etc. on the 2nd & 4th Monday of every month from 11:15am - 12:45pm CT starting September 9, 2024, and ending May 12, 2025.

Free Training Opportunity for ECHO Autism: Early Intervention Participants:

ECHO Autism Communities is offering a speech generating devices and autism spectrum disorder training for people who attend the ECHO Autism: Early Intervention program on a regular basis. Registrants may attend the training virtually on zoom or in-person (Columbia, Missouri).

Training Date: October 28, 2024, from 9:00am to 12:00pm (CT)

If you are a Missouri early intervention professional and you would like to join the ECHO Autism: Early Intervention program, you may register [HERE](#):

