



1

---

---

---

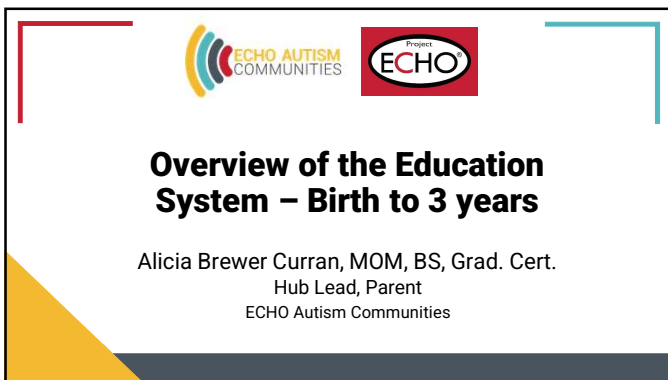
---

---

---

---

---



2

---

---

---

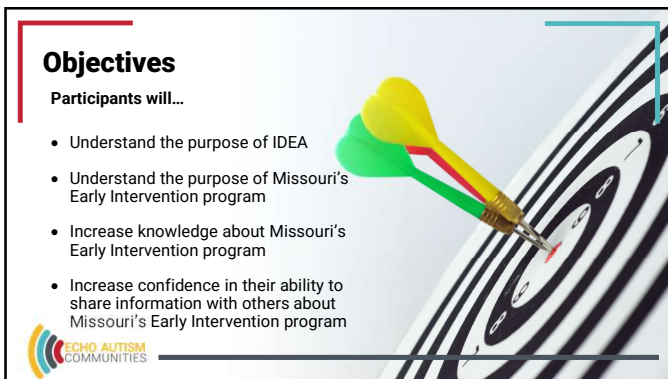
---

---

---

---

---



3

---

---

---

---

---

---

---

---

**Acronyms**

- **IDEA** – Individuals with Disability Education Act
- **IFSP** – Individualized Family Service Plan
- **SPOE** – Service Point of Entry
- **DESE** – Department of Elementary & Secondary Education
- **NICU** – Neonatal Intensive Care Unit
- **EI** – Early Intervention
- **ECSE** – Early Childhood Special Education
- **ECE** – Early Care & Education




4

---

---

---

---

---

---

---

---

**What is IDEA?**

**Individuals with Disability Education Act**

- Federal law ensuring services for children with disabilities
  - Ensures access to a Free Appropriate Public Education (FAPE)
  - Federally funded




5

---

---

---


---

---


---

---

---

**The Purpose of IDEA** 

- "to assure that all children with disabilities have available to them...a free, appropriate public education which emphasizes **special education** and **related services** designed to meet their **unique needs**"
- "to assure that the rights of **children with disabilities** and their **parents...are protected**"
- "to **assist States and localities** to provide for the education of all children with disabilities"
- "to **assess** and **assure** the **effectiveness of efforts** to educate all children with disabilities"



6

---

---

---

---

---

---


---

---

**The Why**

Why does the education system cover birth to 3-year-olds?

- Early Intervention is Part C in Individuals with Disabilities Education Act (IDEA)
- Serves infants and toddlers with disabilities
- Designed to help families enhance their child's development, learning, and participation in family and community life
- Department of Elementary & Secondary Education (DESE) is the agency that implements the program



7

---

---

---

---


---

---

---


---

**Missouri's Early Intervention System**



Belief Statements:

- #1 Families are Decision Makers and the Child's First Teacher
- #2 Effective Services are Designed Around and Promote Family Strengths
- #3 Effective Services are Culturally Competent
- #4 Effective Services are Provided in the Context of the Child's and Family's Natural Routines
- #5 Effective Services are Provided in Natural Environments
- #6 Services and Supports are Individualized
- #7 Competent Providers Focus on Family Competence
- #8 Early Identification and Family Engagement are Critical to Early Intervention



8

---

---

---

---

---


---

---

---

**Where do you start?**

- Referral/Intake
- SPOE Screening
- Referral for evaluation by appropriate team members
- IFSP development, if eligible
- Review of IFSP at least every 6 months (one must be face to face)
- Referral to appropriate school agency 6 months prior to 3rd birthday (no more than 9 months, no less than 90 days)



9

---

---

---

---

---

---

---

---

### Who can make a referral?

- Parents
- Physicians
- Hospitals
- Child-care programs and early learning programs
- Local educational agencies/Schools
- Public health facilities
- Other public health or social service agencies
- Other clinics and health care providers
- Public agencies and staff in the child welfare system
- Homeless family shelters
- Domestic violence shelters and agencies



10

---

---

---

---

---

---

---

---

### How do you make a referral?

- Online referral form
- Contact the SPOE where the child lives
- Complete a paper form and mail to the SPOE where the child lives
- Neonatal Intensive Care Unit (NICU) completes a referral form and sends to the SPOE where the child lives



11

---

---

---

---

---

---

---

---

### What is a System Point of Entry (SPOE)?



Region 1: Greater Atlanta SPOE  
 Region 2: West Georgia SPOE  
 Region 3: North Central SPOE  
 Region 4: Northwest SPOE  
 Region 5: Central/Southern SPOE  
 Region 6: South Central SPOE  
 Region 7: South SPOE  
 Region 8: East Central SPOE  
 Region 9: East SPOE  
 Region 10: Northeast SPOE



12

---

---

---

---

---



---

---

---

### Eligibility Criteria

- Newborn Condition
  - Birth weight <1500 grams (3.31 lbs.) that have 1 or more issues within 30 days of post birth:
    - APGAR score of 6 or less at 5 minutes
    - Intraventricular hemorrhage (Grade 2, 3, or 4)
    - Ventilated for more than 48 hours
    - Code event/Resuscitation was required
  - Diagnosed physical or mental condition
  - Conditions known to cause a developmental delay
  - Developmental Delay (50% in 1 or more areas)
    - Cognitive, communication, adaptive, physical, or social/emotional development

13

---

---

---

---

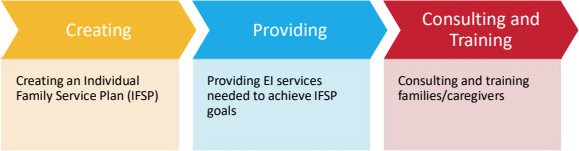
---

---

---

---

### What is a First Steps Provider responsible for?




```

    graph LR
      A[Creating] --> B[Providing]
      B --> C[Consulting and Training]
  
```

**Creating**  
Creating an Individual Family Service Plan (IFSP)

**Providing**  
Providing EI services needed to achieve IFSP goals

**Consulting and Training**  
Consulting and training families/caregivers



14

---

---

---

---

---

---

---

---

### What exactly is an IFSP?

- Plan developed by a multidisciplinary team, including the family, to meet the needs of the child and family.
- Ensures ongoing assessment of the child and the development of goals and outcomes based upon the family-directed assessment of resources, priorities, and concerns of the child's family




15

---

---

---

---

---

---

---

---

### Early Intervention Services

- Assistive Technology
- Audiology
- Dietary/Nutrition Services
- Family Child Care Assistance
- Family Training/Education
- Health Services
- Medical Services
- Nursing Services
- Occupational Therapy
- Physical Therapy
- Psychological Services
- Service Coordination
- Sign & Cued Language Services
- Social Work Services
- Special Instruction
- Speech/Language Pathology
- Transportation Costs
- Vision Services



16

---

---

---

---

---

---

---

---

### Transitioning out of Early Intervention

- Service coordinator starts discussing the options families may consider around 2-years-old
- An official transition planning meeting will occur between 2.3 and 2.9-years/months
- Transitions discussed
  - Early Childhood Special Education (ECSE)
  - Other programs appropriate for the child
- The child transitions out of Early Intervention at age 3-years/36 months
  - Unless the child's birthday falls between April 1<sup>st</sup> and August 15<sup>th</sup>



17

---

---

---

---

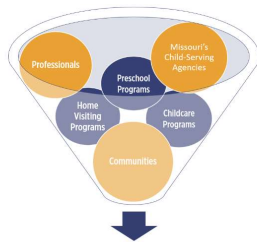
---

---

---

---

Early Connections is a central place for families and professionals to access resources and information about what young children need from the Early Care & Education (ECE) system.



Missouri's Early Care & Education System



18

---

---

---

---

---

---

---

---

**Missouri's Early Care & Education Connections**

**Early Connections is here to help families:**

- Find childcare options
- Find family supports
- Learn about child development
- Access training
- Learn how to get involved in the Early Care and Education System



19

---

---

---

---

---

---

---

---

**Resources:**

Missouri Early Intervention website: <https://dese.mo.gov/childhood/early-intervention>


Information for Parents about First Steps: <https://dese.mo.gov/childhood/early-intervention/first-steps/parents>

First Steps Belief Statements: <https://dese.mo.gov/media/pdf/first-steps-belief-statements>

SPOE Contact Map and Contact Information: <https://dese.mo.gov/media/pdf/first-steps-spoe-contact-information-region>

First Steps Transition Guidance: <https://dese.mo.gov/childhood/early-intervention/first-steps/transition-first-steps-early-childhood>

Missouri's Early Care and Education Connections Website: <https://earlyconnections.mo.gov/>



20

---

---

---

---

---

---

---

---





21

---

---

---

---

---

---

---

---