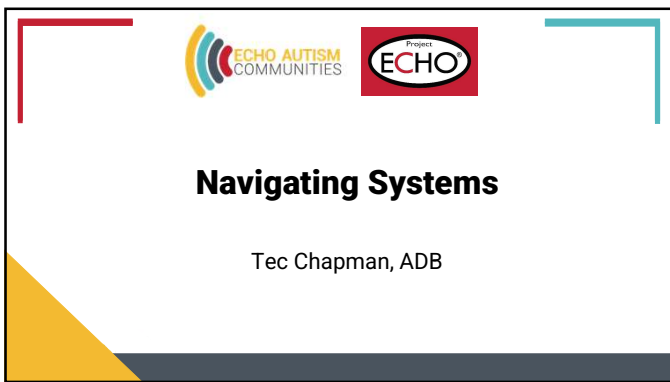
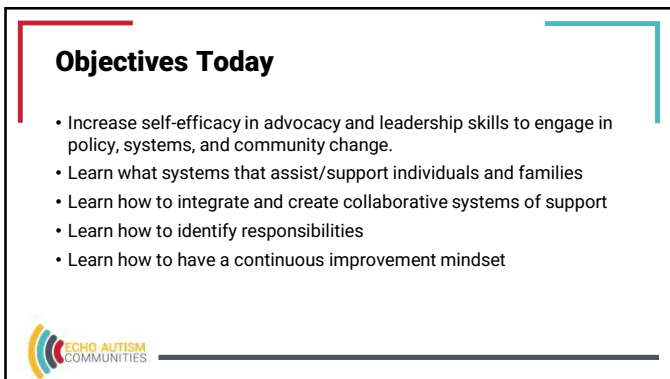




1



2



3

Entities/Systems that may be a Resource/Support


- Division of Vocational Rehabilitation
- Rehabilitation Services for the Blind
- Division of Developmental Disabilities
- Division of Behavioral Health
- Special Health Care Needs
- K-12 Education/LEA
- MO Family to Family
- MO Community Options & Resources
mocor.mo.gov
- School-To-Careers
- Independent Living Centers
- Senate Bill 40 Boards
- Senior and Disability Services- DHSS
- Workforce Board (State & Regional)
- Family Support Division (Medicaid, SNAP, TANF, etc.)
- MO First Steps
- Early Head Start/Head Start
- Developmental Disability Council



4

DIVISION OF VOCATIONAL REHABILITATION
Employment Support & Assistance


<p><i>Eligibility & Referral</i></p> <ul style="list-style-type: none"> • Has a physical or mental impairment • Disability impacts ability to be employed • VR services are needed to obtain employment • Typical referral is 1 to 2 years before graduation (<i>informal consult earlier</i>) 	<p><i>Services</i></p> <ul style="list-style-type: none"> • Transition consultation • Limited purchased services prior to graduation • Expanded purchased services following graduation • Cooperative Work Experience Program
--	---



5

REHABILITATION SERVICES FOR THE BLIND
Employment Support & Assistance for People with Low Vision or Blind

<p><i>Eligibility & Referral</i></p> <ul style="list-style-type: none"> • Same as DVR but for people who have low vision or blind • Formal referral is suggested by age 14 (<i>informal consult earlier</i>) 	<p><i>Services</i></p> <ul style="list-style-type: none"> • Consultation, education, and advocacy (<i>available before age 14</i>) • Same as DVR but for people who have low visual or blind
--	--



6

DIVISION OF DEVELOPMENTAL DISABILITIES
Services & Supports for People with Developmental Disabilities


<p><i>Eligibility & Referral</i></p> <ul style="list-style-type: none"> • People of all ages • Disability occurring prior to age 22 • Eligibility determined by regional offices • Costs determined by a "standard means" test 	<p><i>Services</i></p> <ul style="list-style-type: none"> • Service coordination (including transition) • Family and Self-Directed supports • Autism Services • Residential supports • Employment and other community supports, including assistive technology • Medicaid Waivers (4 of them)
--	---



7

DIVISION OF BEHAVIORAL SERVICES
Services to People with Substance Use & Mental Illness


<p><i>Eligibility & Referral</i></p> <ul style="list-style-type: none"> • People of all ages • Eligibility determined by regional community mental health centers in 25 service areas • Costs determined by a "standard means" test 	<p><i>Services</i></p> <ul style="list-style-type: none"> • Outpatient services • Case Management • Day Treatment • Residential Placement • Inpatient services • Families first • Wrap around services • Respite
--	--



8

SENATE BILL 40 BOARDS
County Services for People with Developmental Disabilities


<p><i>Eligibility & Referral</i></p> <ul style="list-style-type: none"> • People of all ages • Disability occurring prior to age 22 • Eligibility determined by individual counties • 85 participating counties 	<p><i>Services</i></p> <ul style="list-style-type: none"> • Services vary greatly from county to county • Originally set up to provide sheltered employment, group homes, and related services • Most offer an array of services including employment, residential and other related services
---	--



9

DIVISION OF SENIOR & DISABILITY SERVICES
Services to Elderly and People with Disabilities


<p><i>Eligibility & Referral</i></p> <ul style="list-style-type: none"> • Between 18 and 59 years of age • Meet guidelines for economic, social, and care needs • Services determined through assessments 	<p><i>Services</i></p> <ul style="list-style-type: none"> • Personal Care • Homemaker/Chore • Nursing • Respite • Case management • Protective services
--	---



10

INDEPENDENT LIVING CENTERS
Non-profit Organizations Designed and Operated by People with Disabilities


<p><i>Eligibility & Referral</i></p> <ul style="list-style-type: none"> • Services to people with all types of disabilities • Serve people of all age ranges • Services vary from center to center 	<p><i>Services</i></p> <ul style="list-style-type: none"> • Individual & systems advocacy • Information & referral • Peer counseling • Independent living skills training • Assistive technology & housing assistance • Attendant care
---	--



11

DIVISION OF FAMILY SERVICES
Wide Range of Services to Individuals and Their Families


<p><i>Eligibility & Referral</i></p> <ul style="list-style-type: none"> • Offices in each of the 114 Missouri counties • Apply for services through county offices • Eligibility criteria vary based upon program 	<p><i>Services</i></p> <ul style="list-style-type: none"> • Self-Sufficiency Services (e.g. TA, food stamps, energy assistance, Medicaid) • Children's Services (e.g. abuse & neglect, parental stress hotline, adoption, child care assistance)
--	--



12

Missouri Job Centers
Comprehensive Employment & Training Assistance


<p><i>Eligibility & Referral</i></p> <ul style="list-style-type: none"> • Services to individuals & business • Adult, dislocated worker, & youth programs • 44 full service locations in 15 service delivery areas • Youth programs = In & out of school youth who meet income criteria 	<p><i>Youth & Adult Services</i></p> <ul style="list-style-type: none"> • Assessments • Classroom training (e.g. G.E.D., occupational skills) • Work experience (including summer work) • On-the-job training • Follow-up services
---	---



13

MISSOURI COMMUNITY CAREERS SYSTEM
School-to-Career Programs for All Kids


<p><i>Eligibility & Referral</i></p> <ul style="list-style-type: none"> • Includes all grade levels • Includes kids who have disabilities • Administered through local partnerships in 15 state regions 	<p><i>Services</i></p> <ul style="list-style-type: none"> • School-based learning (e.g. career awareness activities) • Work-based learning (e.g. job-shadowing, mentoring, internships) • Connecting activities (e.g. matching students, training mentors)
--	---



14

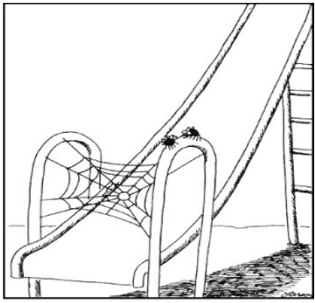
Closing Thoughts

- Use This Information:
 - To Work Collaboratively with others
 - To Identify Individual Responsibilities
 - To Identify My Responsibilities (*Not all Activities will be other's responsibilities*)
 - To Monitor & Evaluate Progress
 - To Support Continued Planning (*Interests and Goals Change as We Grow and Develop*)




15

A Vision Perspective





"If we pull this off, we'll eat like kings."



16


Sometimes to accomplish a desired future we have to get in the water

17

Resources

- Google MO Community Career Centers for career centers locations in MO
- MO Job Centers <https://jobs.mo.gov/career-centers/>
- MO Department of Social Services Family Services Division <https://mofss.mo.gov/>
- MO Centers for Independent Living <https://mosic.org/mo-centers-cil/>
- MO Department of Health & Senior Services, Division of Senior & Disability Services <https://health.mo.gov/seniors/>
- MO Division of Vocational Rehabilitation <https://dese.mo.gov/adult-learning-rehabilitation-services/vocational-rehabilitation>
- MO Division of Developmental Disabilities <https://dmh.mo.gov/dev-disabilities>
- MO Division of Behavioral Health <https://dmh.mo.gov/behavioral-health>
- MO Senate Bill 40 Boards www.mocdds.org
- MO Rehabilitation Services for the Blind <https://rfsa.mo.gov/fsl/rsh/>
- MO Special Health Care Needs <https://health.mo.gov/living/families/shcn/>



18