



1

---

---

---

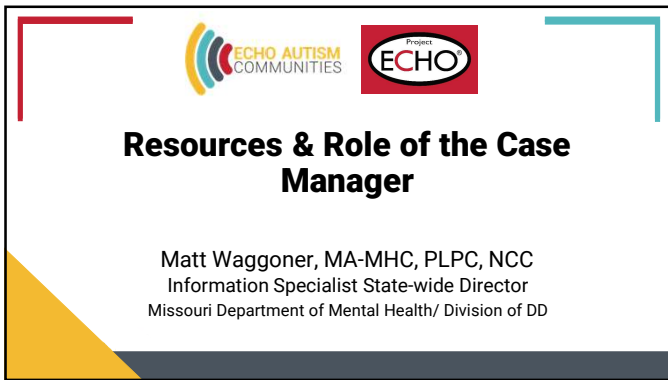
---

---

---

---

---



2

---

---

---

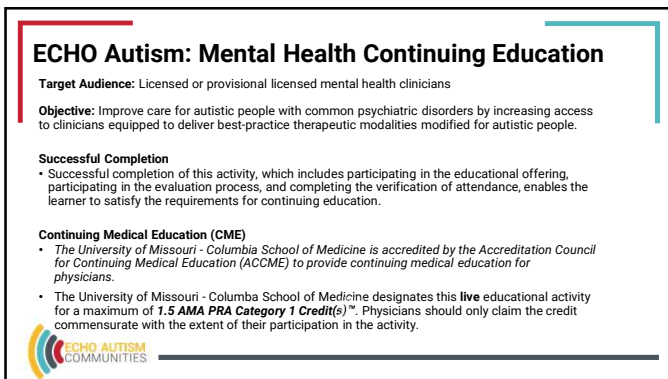
---

---

---

---

---



3

---

---

---

---

---

---

---


---

**ECHO Autism: Mental Health Speaker Disclosure**

**Relevant Financial Disclosures**  
 Current ACCME (Accreditation Council for Continuing Medical Education) rules state that participants in CE activities should be made aware of any relevant affiliation or financial interest in the previous 24 months that may affect the planning of an educational activity or a speaker's presentation(s).  
 Each planning committee member and speaker has been requested to complete a financial relationship reporting form for the *ECHO Autism Mental Health Series - Cohort 4*.

**Speaker Disclosures:**

- Kristin Sohl, MD receives research support from Cognoa Behavior Health and is a medical science collaborator for Quadrant Biosciences. **All relevant financial relationships for the presenter have been mitigated.**
- **No speaker or planning committee member has a relevant financial interest.**




---

---

---

---

---



---

---

---

4

**Two-ish Basic Options Within the Division of DD**


---

---

---

---

---

---


---

---

5

**Targeted Case Management (TCM)**

- Targeted case management for persons with developmental disabilities is a MO HealthNet (Medicaid) service program in Missouri.
- 'Targeted' means the case management services under this program are not available to all MO HealthNet eligible people—only to those who have been found eligible for Missouri Division of Developmental Disabilities services.




---

---

---

---

---

---

---

---

6


### DMH-DD Eligibility vs. CMHC Eligibility

Federal Obligation Mandates that all individuals eligible for DD services receive a "case management service".

It relates to the coordination of services and supports around the eligible individual.

DD Support Coordination is VASTLY different than the same service authorized by Community Mental Health Centers.

• DD Support Coordinators may not provide a direct service




---

---

---

---

---

---

---

---

7

### Support Coordinator Roles:

Support Coordinator Roles


1 ASSESSMENT

2 PLANNING

3 COORDINATING

4 LINKING

5 MONITORING




---

---

---

---

---


---

---


---

8

### Assessment & Planning



- Assessment of the individual's need for medical, social, educational & other services.
- Facilitate the development of an Individual Support Plan (ISP) annually & revise as the individual's needs change.
  - Goals & actions to address the needs of the individual
  - Ensure active participation of the individual and the support team
  - Course of action to respond to the assessed needs of the individual




---

---

---

---

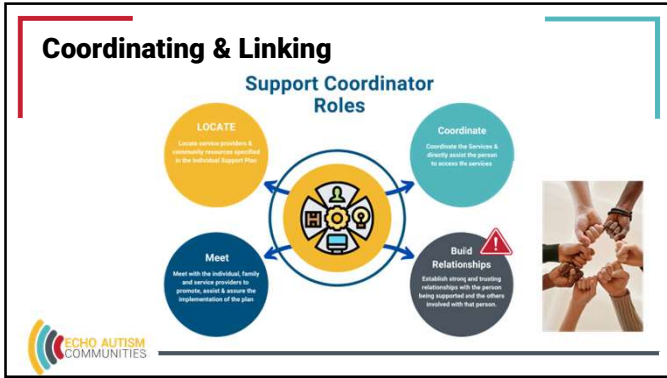
---

---

---

---

9



10

---

---

---

---

---

---

---

---

### Monitor

Monitor service delivery to ensure implementation of the plan

Depending on the service – monthly or quarterly monitoring is performed

Medicaid waiver services require face to face visits with the individual and service provider

**ECHO AUTISM COMMUNITIES**

11

---

---

---

---

---

---

---

---

### Other

**Attend & Support**  
Attend IEP meetings & medical appointments to support the family and to facilitate communication and understanding

**Referral**  
Refer people to Missouri Medicaid Waiver Programs

**Referral**  
Refer people to the Missouri Autism Project Funding & Services

**Information**  
Send family information about trainings, social & recreational events, camps and other resources

**SUPPORT COORDINATOR ROLES**

**ECHO AUTISM COMMUNITIES**

12

---

---

---

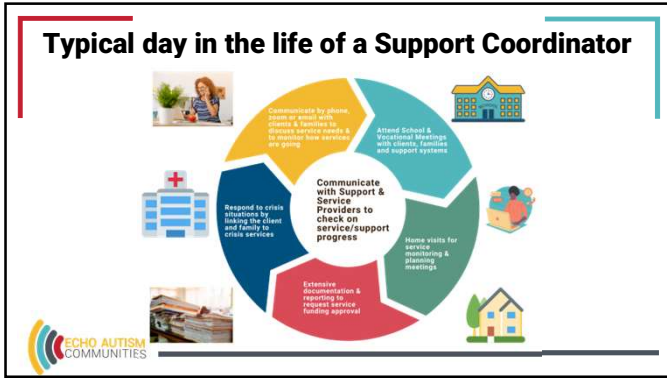
---

---

---

---

---



13

---

---

---

---

---

---

---

---

### No Medicaid? Now what?

- Blue – Case management
- White – Information Specialist Program for Individuals not currently enrolled in Medicaid
- Information specialists assist with Medicaid applications and provide families with resource information.

Information Specialist Referral Map

ECHO AUTISM COMMUNITIES

14

---

---

---

---

---

---

---

---

### How can I help a family access DMH-DD services

Parent or guardian will call the Regional Office assigned to the child's county of residence to "apply for services"

Parent will be connected to an "intake specialist"

ECHO AUTISM COMMUNITIES

15

---

---

---

---

---

---

---

---



---

---

---

---

---

---

---

---