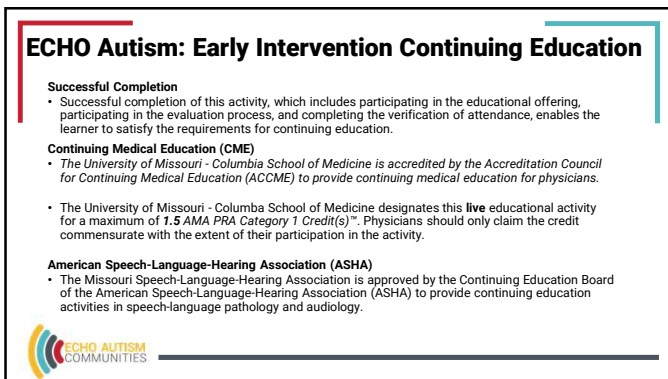




1



2



3

ECHO Autism: Early Intervention Speaker Disclosure

LPC, Social Work, Psychology, 50-minute hour CEs

The University of Missouri Continuing Education for Health Professions (CEHP) is part of an accredited university in the state of Missouri. As such, this program meets the requirements for Licensed Professional Counselors, Psychologists, and Social Workers with Missouri licenses. CEHP attests that this program contains 1.5 clock hours of instructional time. Licensed professionals measuring CE credit based on a 50-minute hour may claim up to 1.8 Contact Hours for full attendance at this program.

Relevant Financial Relationship Disclosures

Current ACCME (Accreditation Council for Continuing Medical Education) rules state that participants in CE activities should be made aware of any relevant affiliation or financial interest in the previous 24 months that may affect the planning of an educational activity or a speaker's presentation(s). Each planning committee member and speaker has been requested to complete a financial relationship reporting form for the ECHO Autism: Early Intervention Series

Kristin Sohl, MD,FAAP receives support:

•Cognoa Behavior Health – research support

•Quadrant Biosciences – medical science collaborator

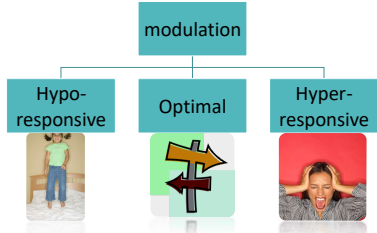
All relevant financial relationships for the presenter(s) have been mitigated.

No other speaker or planning committee member has a relevant financial interest



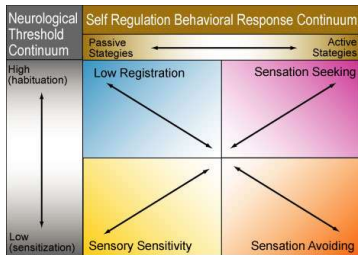
4

Sensory differences as a continuum



5


Dunn's Model of Sensory Modulation



6

Sensory differences in autism


- Variable between subtypes of autism
 - NOT found in ALL people with autism (not necessary for diagnosis)
- One study found:
 - 39% of children with ASD under responsive
 - 20% of children with ASD hypersensitive
 - 36% of children show a mixed pattern of responses

7

Assessment of sensory processing


- Parent/teacher report
- Standardized Sensory questionnaire (SIPT, SP-2, MAP, SPM, TIE, SEQ, COP, SPS, TIP, MPMA, CTSIB, CSEA, PIPS)
- Observation of daily functional activities
- ASI would include (historical info, reason for referral, performance patterns, sensory processing modulation and discrimination, postural ocular control, visual-perceptual, fine motor skills, motor coordination/gross motor skills/praxis, organization skills, performance, summary of interpretation)



8

Sensory Intervention

- Environmental changes/modifications
- Predictability
- Appropriate escape from non-preferred
- Coaching with parental or teacher education
- Occupation based interventions (leisure activities)
- Qigong massage



9

Did it work?

ECHO AUTISM COMMUNITIES

10

Sensory Integration

- “Sensory Integration” (SI) is considered a “specialty” of occupational therapy, it’s not part of curriculum or a qualification to be certified as an entry-level pediatric therapist.
- SI training is ~\$2,700 and a total of 4 weeks to become trained in the SI approach. Administration of the SIPT requires advanced training in sensory integration theory and certification in test administration and interpretation.
- Certification is available to occupational therapists, physical therapists, and speech-language pathologists through the University of Southern California and Western Psychological Services Comprehensive Program in Sensory Integration. (AOTA)

ECHO AUTISM COMMUNITIES

11

National OT stance on “Sensory Processing Disorder”

From the 2010 AJOT, SI issue:

- “we chose to describe the problem (i.e., children and adolescents with difficulty processing and integrating sensory information), rather than name a disorder (sensory integrative dysfunction or sensory processing disorder)”

ECHO AUTISM COMMUNITIES

12